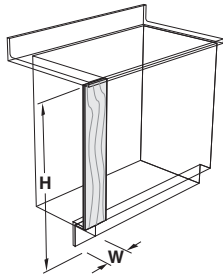


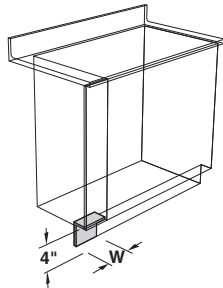
Wood Fillers, Soffits & Panels

Face Fillers



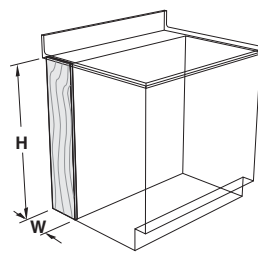
- 36" High (H)**
- X-WP0236-00_0 2" W
 - X-WP0436-00_0 4" W
 - X-WP0636-00_0 6" W
 - X-WP1236-00_0 12" W
- 48" High (H)**
- X-WP0248-00_0 2" W
 - X-WP0448-00_0 4" W
 - X-WP0648-00_0 6" W
 - X-WP1248-00_0 12" W
- 84" High (H)**
- X-WP0284-00_0 2" W
 - X-WP0484-00_0 4" W
 - X-WP0684-00_0 6" W
 - X-WP1284-00_0 12" W

Toe Space Fillers



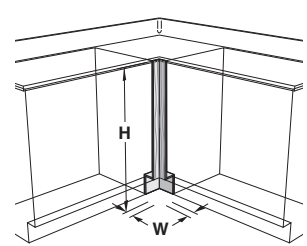
- X-WTP412-0000 12" W
- X-WTP424-0000 24" W
- X-WTP436-0000 36" W
- X-WTP448-0000 48" W

Rear Fillers



- 36" High (H)**
- X-WP0136-00_0 1" W
 - X-WP0736-00_0 7" W
 - X-WP0836-00_0 8" W
 - X-WP1436-00_0 14" W
 - X-WP1636-00_0 16" W

Corner Fillers

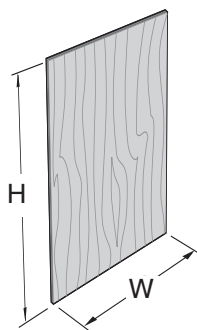


- 36" High (H)**
- X-WC0236-00_0 2" W
 - X-WC0436-00_0 4" W
 - X-WC0636-00_0 6" W

All fillers designed to be field-cut to required length and fit. All fabricated from 3/4" thick hardwood plywood with edges cut square for flush installation. Fillers finished face side only, rear coated with clear sealer. Toe Space Filler finished in clear sealer only.

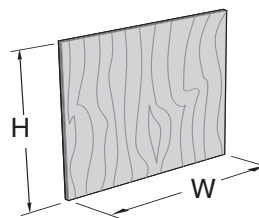
Note: To specify panel to be finished on both sides, add an **S** to the part number.
Example: **X-WP0236-0010S**

Finished Panels Standard Grain



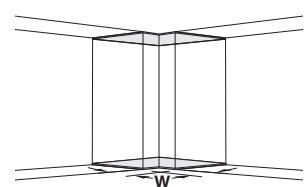
- 36"W x 48"H Panel**
- X-WS3648-00_0 1/4" Thick
 - X-WP3648-00_0 3/4" Thick
- 24"W x 96"H Panel**
- X-WS2496-00_0 1/4" Thick
 - X-WP2496-00_0 3/4" Thick
- 48"W x 96"H Panel**
- X-WS4896-00_0 1/4" Thick
 - X-WP4896-00_0 3/4" Thick

Finished Panels Cross Grain



- 48"W x 36"H Panel**
- X-WS4836-00_0 1/4" Thick
 - X-WP4836-00_0 3/4" Thick

Corner Soffits



- for 12 3/4" Deep Cabinets**
- X-WSF212-00_0 2" W
 - X-WSF412-00_0 4" W
 - X-WSF612-00_0 6" W
- for 16 3/4" Deep Cabinets**
- X-WSF216-00_0 2" W
 - X-WSF416-00_0 4" W
 - X-WSF616-00_0 6" W

Panels can be field-cut to size for fabricating finished backs, soffits, miscellaneous fillers, etc. Finished front face only, rear coated with clear sealer.

Note: To specify panel to be finished on both sides, add an **S** to the part number. Example: **X-WP0236-0010S**

1/4" plywood panels used to close opening between two adjacent wall cabinets on opposite legs of L-shaped furniture assemblies. Order two to close off top and bottom