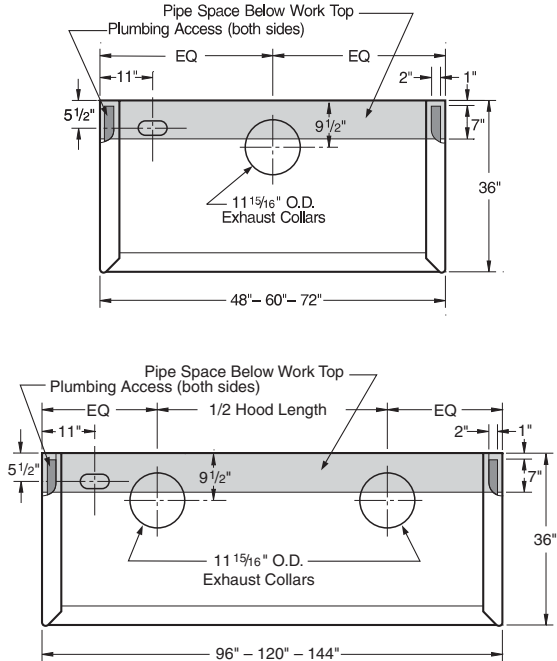


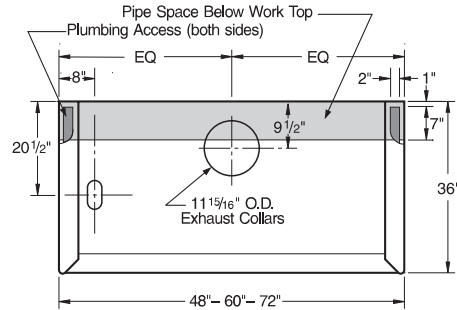
# Supreme Air Fume Hood Technical Data

## Bench Hood – Rough-In Information

### Rough-In for H05–H07–H10–H70 Bench Hoods

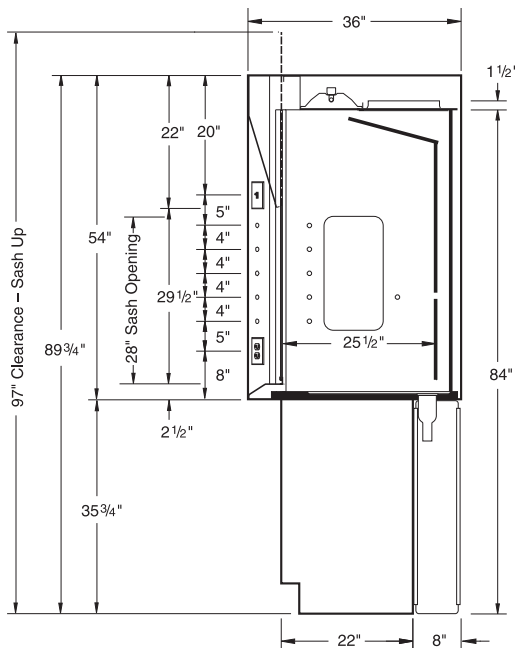


### Rough-In for H09 ADA Bench Hood

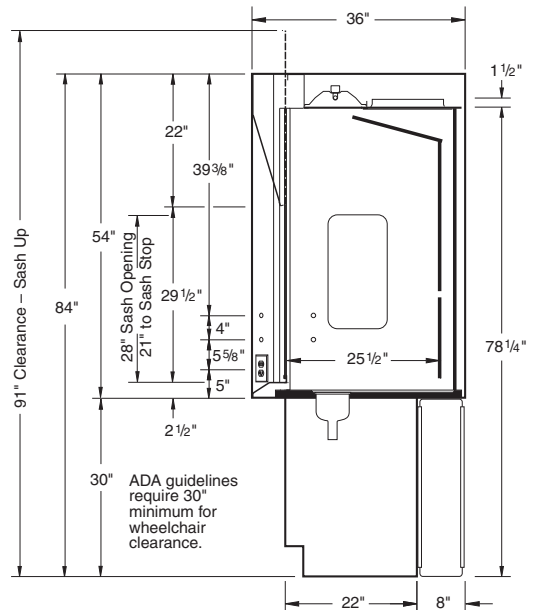


## Bench Hood – Dimensional Information

### Vertical Section H05 & H07 Bench Hoods



### Vertical Section H08 & H09 ADA Bench Hood

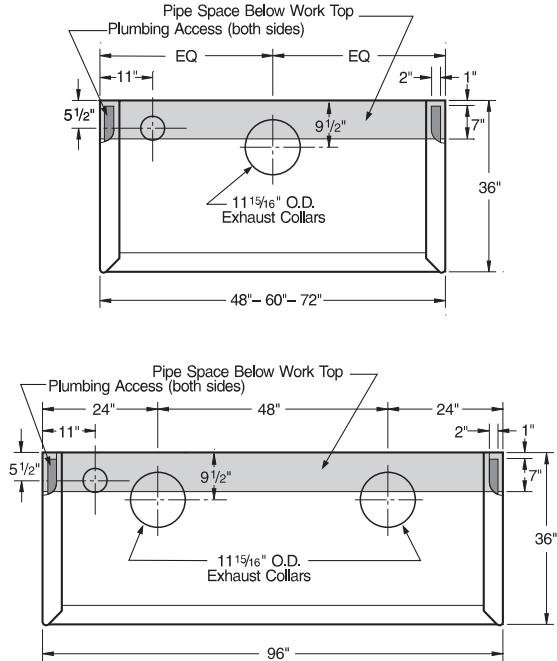




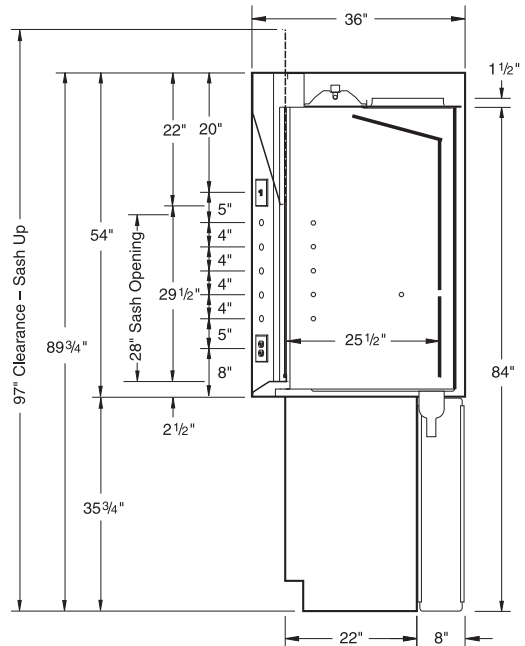
# Supreme Air Fume Hood Technical Data

## Isotope Hood - Rough-In & Dimensional Information

### Rough-In for H20 Isotope Bench Hood

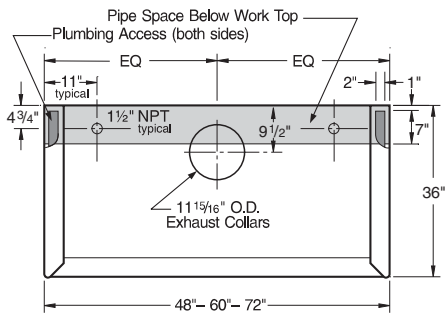


### Vertical Section H20 Isotope Bench Hood

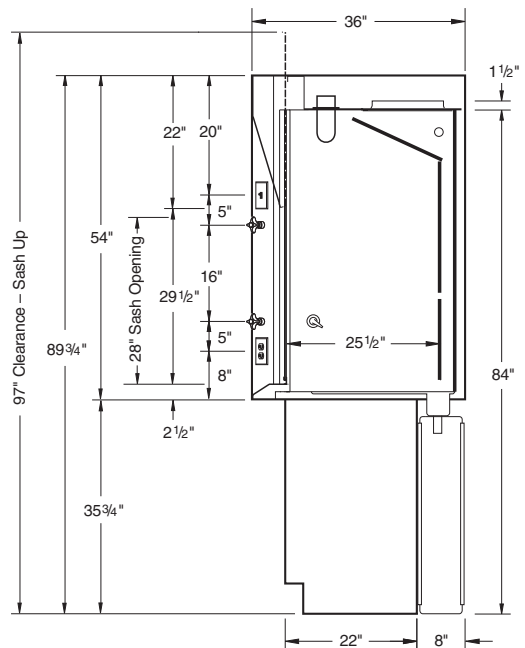


## Perchloric Acid Hood - Rough-In & Dimensional Information

### Rough-In for H25 Perchloric Acid Hood



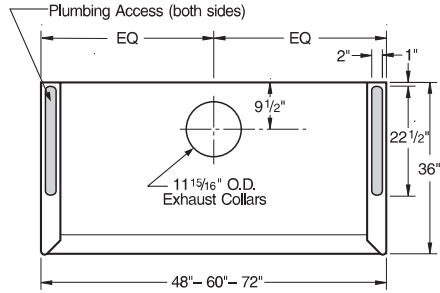
### Vertical Section H25 Perchloric Acid Bench Hood



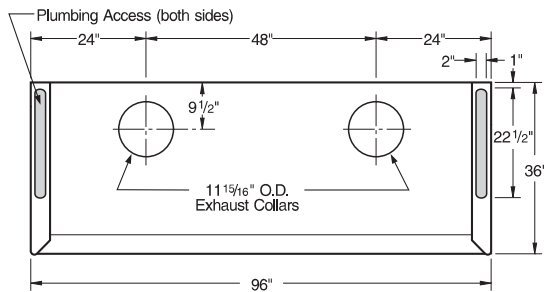
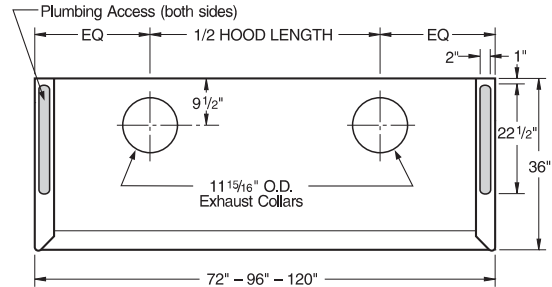
# Supreme Air Fume Hood Technical Data

## Walk-In Hood - Rough-In Information

### Rough-In for H30 & H32 Vertical Sash Walk-In Hoods

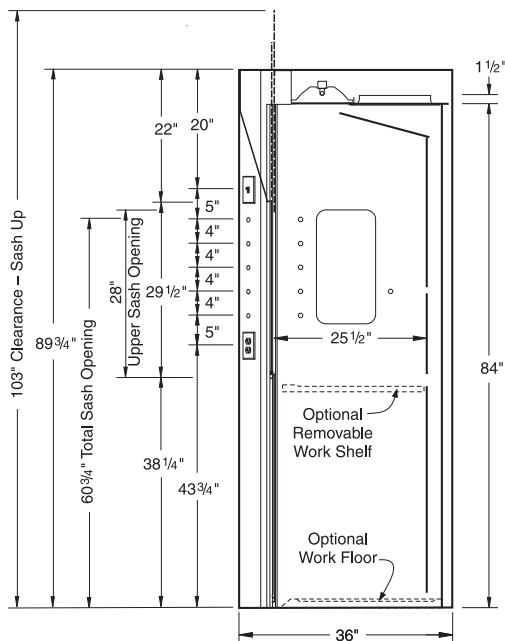


### Rough-In for H34 Horizontal Sash Walk-In Hood

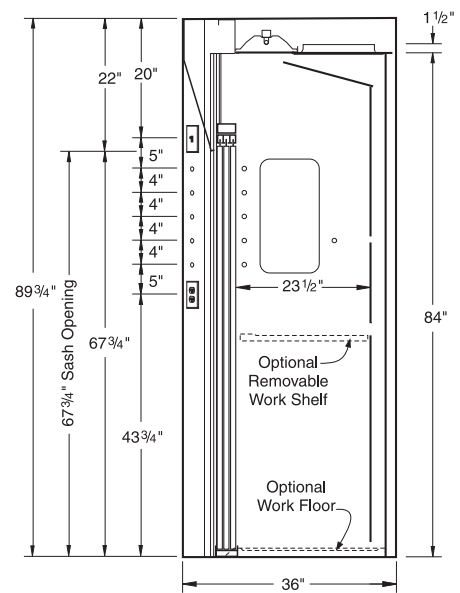


## Walk-In Hood - Dimensional Information

### Vertical Section H30 & H32 Vertical Sash Walk-In Hoods



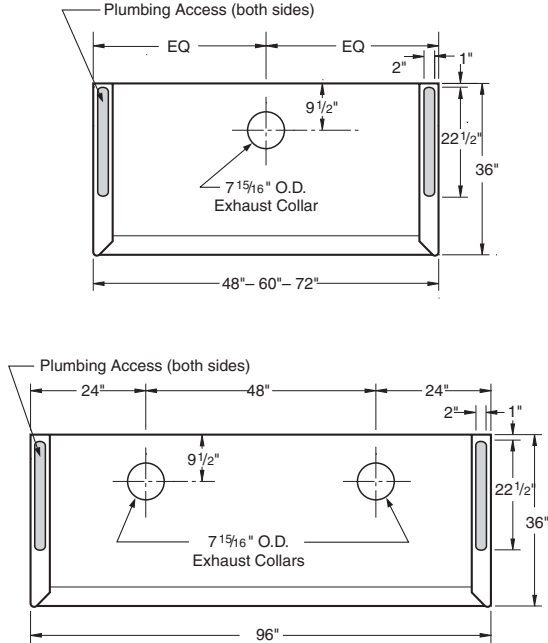
### Vertical Section H34 Horizontal Sash Walk-In Hood



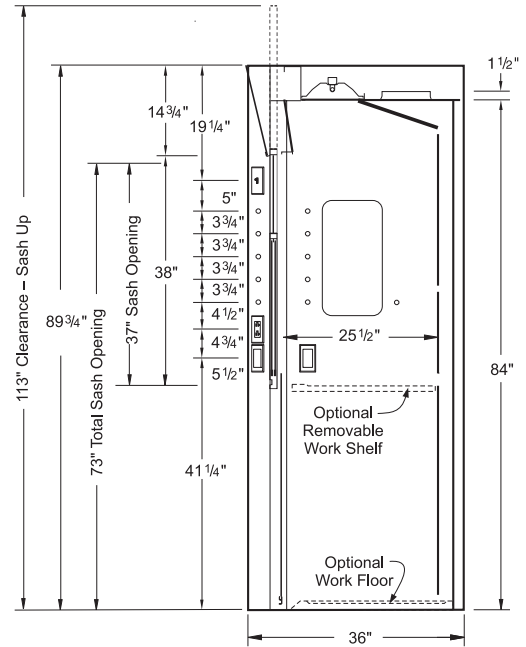
# Supreme Air Fume Hood Technical Data

## Dynamic Barrier Walk-In - Rough-In & Dimensional Information

### Rough-In for H52 Dynamic Barrier Walk-In Hood

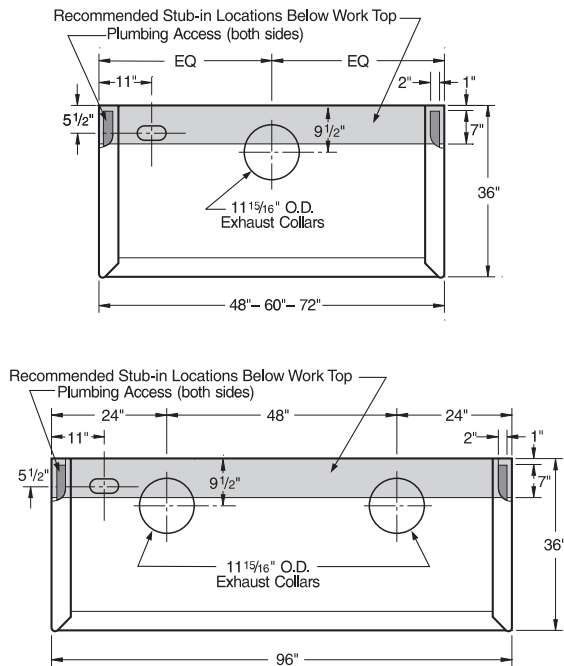


### Vertical Section H52 Dynamic Barrier Walk-In Hood

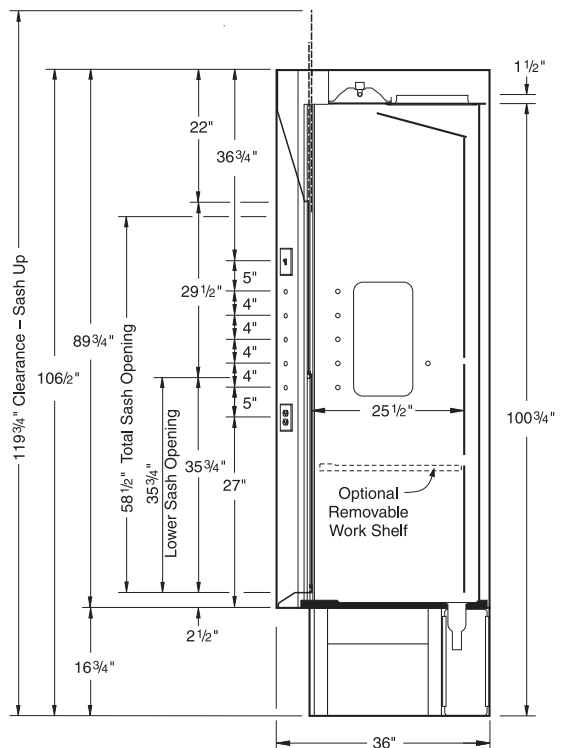


## Distillation Hood - Rough-In & Dimensional Information

### Rough-In for H36 Distillation Hood



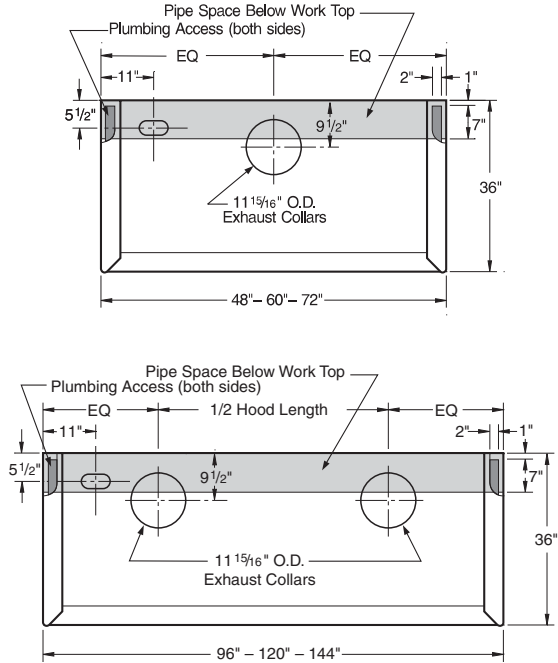
### Vertical Section H36 Distillation Hood



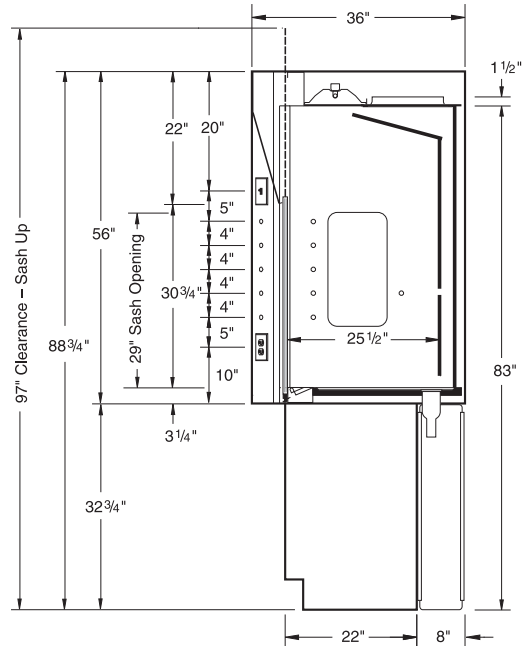
# Supreme Air Fume Hood Technical Data

## HOPEC Bench Hood - Rough-In & Dimensional Information

### Rough-In for HOP Bench Hoods

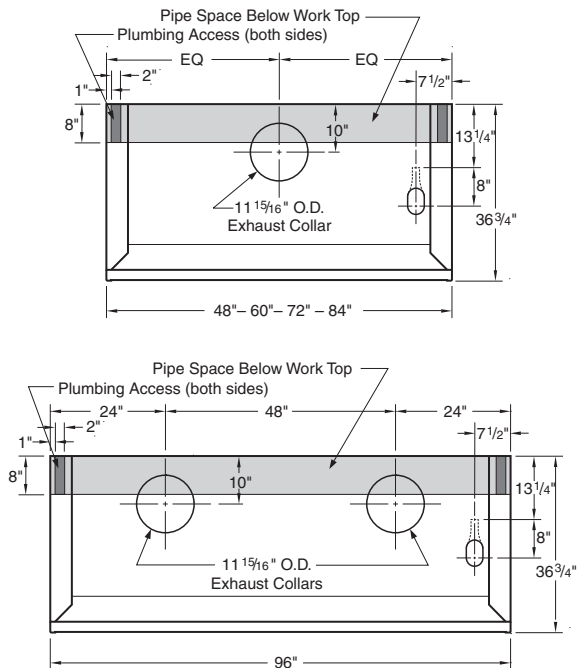


### Vertical Section HOP Bench Hoods

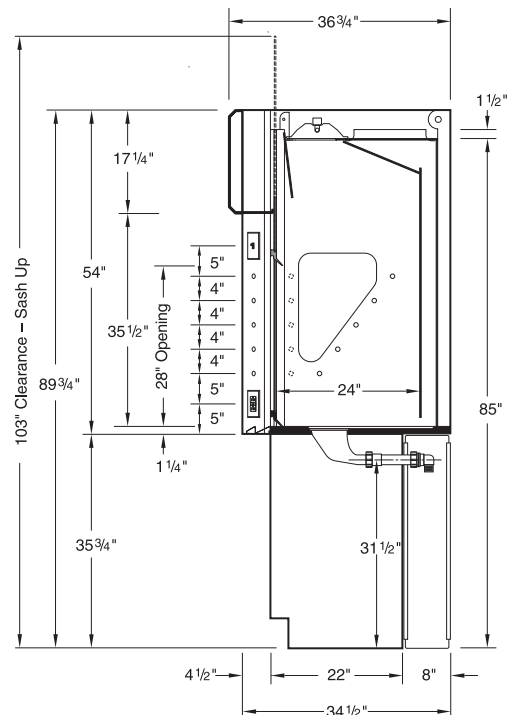


## Supreme Air LV Bench Hood - Rough-In & Dimensional Information

### Rough-In for Supreme Air LV Bench Hoods



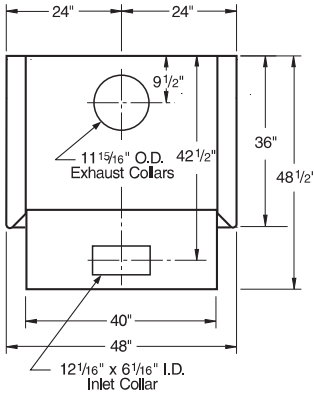
### Vertical Section Supreme Air LV Bench Hoods



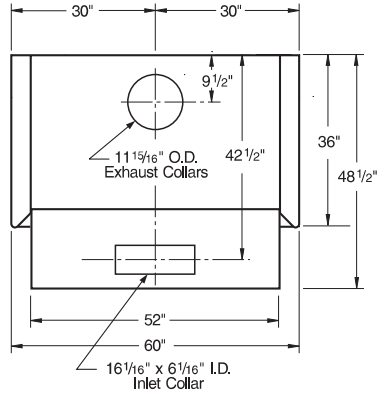
# Supreme Air Fume Hood Technical Data

## Auxiliary Air Chamber - Rough-In & Dimensional Information

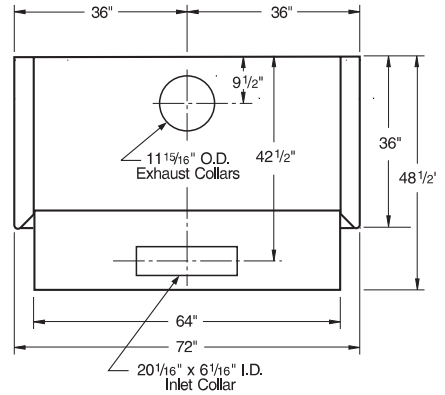
**4'-0" - 48"**



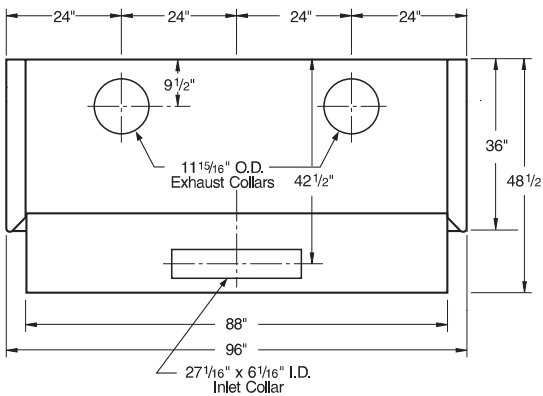
**5'-0" - 60"**



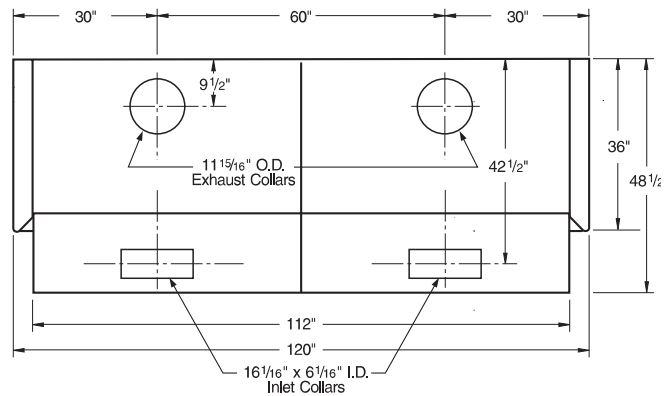
**6'-0" - 72"**



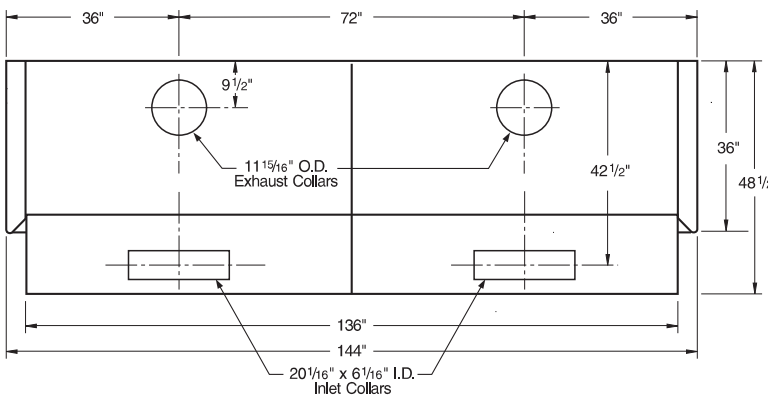
**8'-0" - 96"**



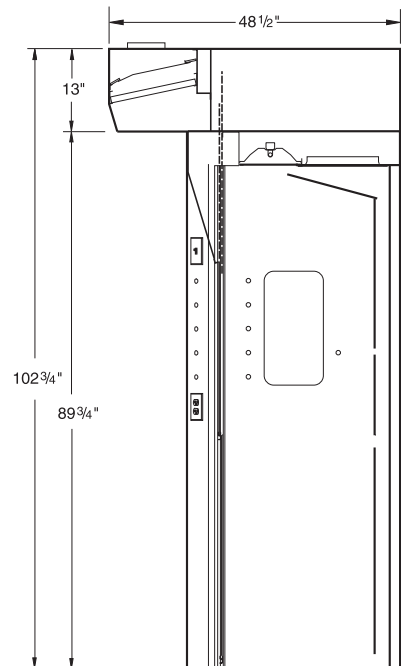
**10'-0" - 120"**



**12'-0" - 144"**

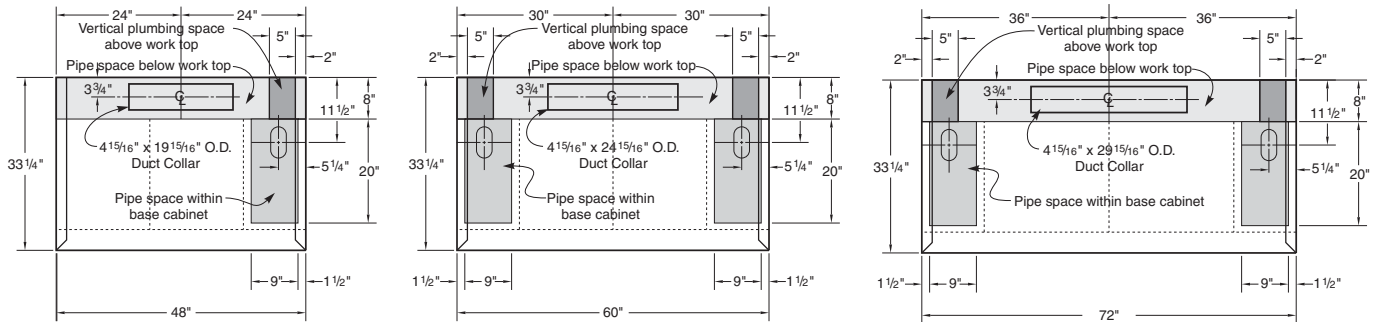


**Vertical Section**

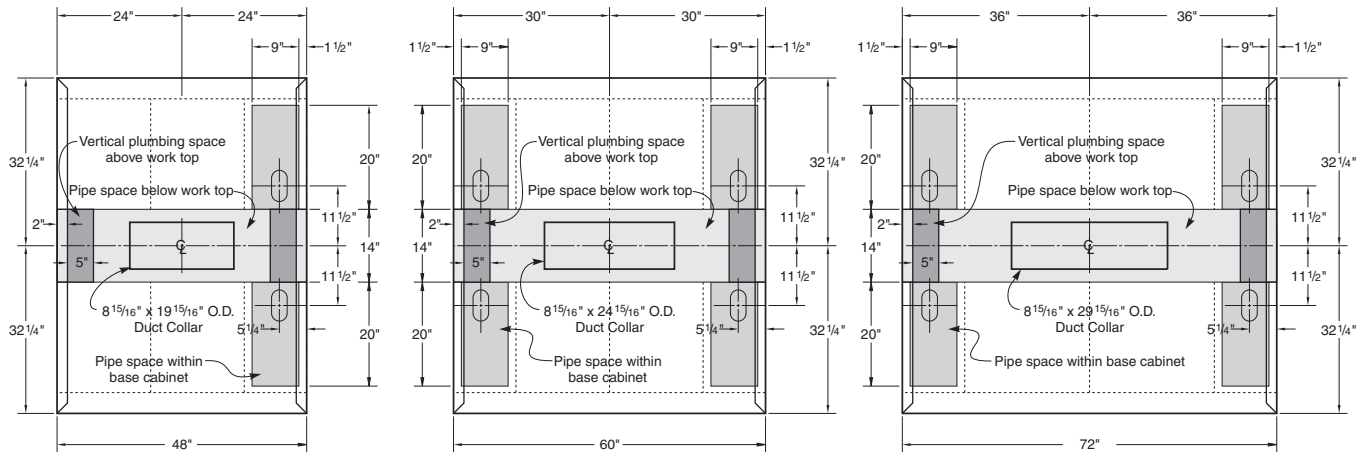


# TruView<sup>®</sup> Teaching Hood Technical Data

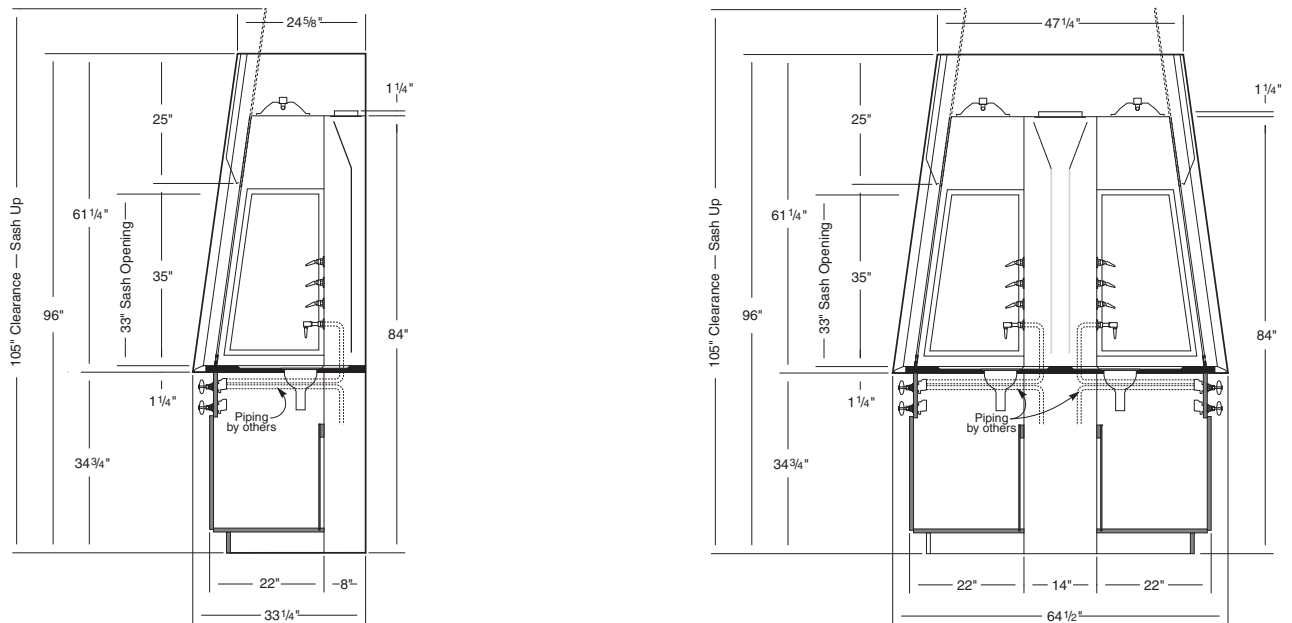
## Single-sided Hood Rough-In Information



## Double-sided Hood Rough-In Information



## Dimensional Information



ADA height base units subtracts 2" from cabinet height, overall height, and sash clearance, steel base cabinets add 1".